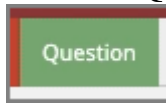
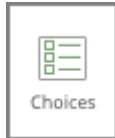

Custom Drag and Drop Example 3 - Setting Up Matches and Drop Distractor

Created On: January 18, 2023

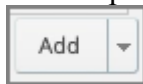
1. Select the **Question** tab.



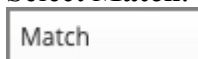
2. Select **Choices**.



3. The Edit Question Properties panel will open to the right of the Stage.
To set up the first Match, select the **Add** button.



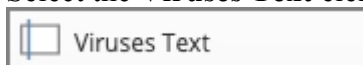
4. Select **Match**.



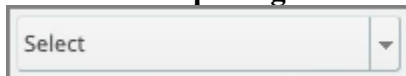
5. Select the **Drag Item** selection list.



6. Select the **Viruses Text** element.



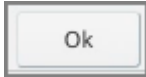
7. The Viruses Text element is now bound in red on the Stage to show it was selected.
Select the **Drop Target** selection list.



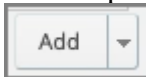
8. Select the **Malware Target** element.



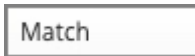
9. Select **Ok**.



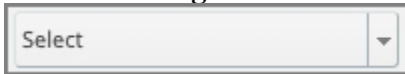
10. To set up the second Match, select the **Add** button.



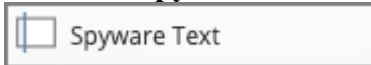
11. Select **Match**.



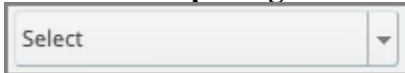
12. Select the **Drag Item selection list**.



13. Select the **Spyware Text** element.



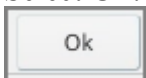
14. Select the **Drop Target selection list**.



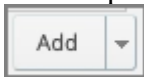
15. Select the **Malware Target** element.



16. Select **Ok**.



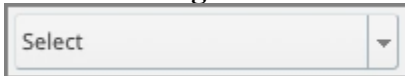
17. To set up the third Match, select the **Add** button.



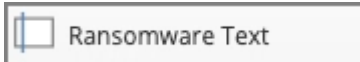
18. Select Match.



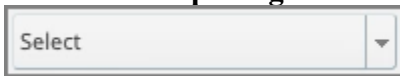
19. Select the **Drag Item** selection list.



20. Select the **Ransomware Text** element.



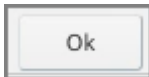
21. Select the **Drop Target** selection list.



22. Select the **Malware Target** element.

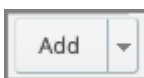


23. Select **Ok**.



24. Now that the three Matches are set up, we can add the Drop Distractor.

Select the **Add** button.



25. Select **Drop distractor**.

Drop distractor


26. The Drag Item selection list is now unavailable.

Select the **Drop Target selection list**.

Select

27. The Malware Target element is not available because we previously set it to be a drop target for our three Matches.

Select the **Social Engineering Target** element.

 Social Engineering Target

28. Select **Ok**.

Ok

29. Now that all the Matches and the Drag Distractor are set up, select **Update** to save your changes.

Update

30. The draggable elements on the Stage now show a hand icon and the drop target elements show a target icon.