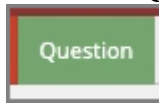
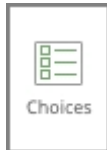

Custom Drag and Drop Example 2 - Setting Up Matches and Drag Distractor

Created On: January 18, 2023

1. Select the **Question** tab.

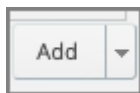


2. Select **Choices**.



3. The Edit Question Properties panel will open to the right of the Stage.

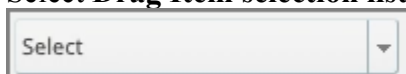
To set up the first Match, select the **Add** button.



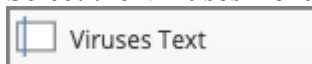
4. Select **Match**.



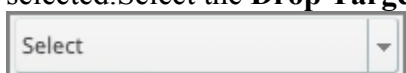
5. Select **Drag Item selection list**.



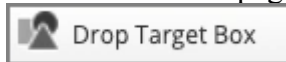
6. Select the **Viruses Text** element.



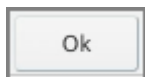
7. The Viruses Text element is now bound in red on the Stage to show it was selected. Select the **Drop Target selection list**.



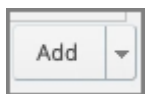
8. Select **Drop Target Box**. (This is the only element on the list because it is the only type of element on the page that can be a Target element.)



9. The Drop target Box element is now bound in red on the Stage to show it was selected. Select **Ok**.



10. To set up the second Match, select the **Add** button.



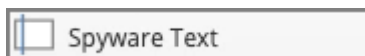
11. Select **Match**.



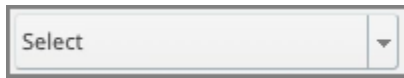
12. Select the **Drag Item selection list**.



13. Select the **Spyware Text** element.



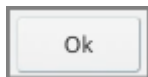
14. Select the **Drop Target selection list**.



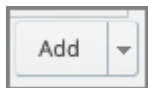
15. Select **Drop Target Box**.



16. Select **Ok**.



17. To set up the third Match, select the **Add** button.



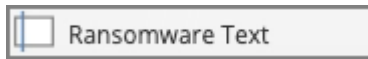
18. Select **Match**.



19. Select the **Drag Item selection list**.



20. Select the **Ransomware Text** element.



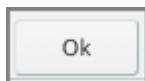
21. Select the **Drop Target selection list**.



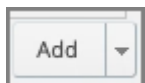
22. Select **Drop Target Box**.



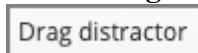
23. Select **Ok**.



24. To set up the Drag Distractor, select the **Add** button.



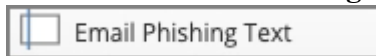
25. Select **Drag Distractor**.



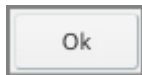
26. Select the **Drag Item selection list**.



27. Select the **Email Phishing Text** element.



28. There is no Drop Target for a drag distractor, so the Drop Target Selection List is unavailable. Select **Ok**.



29. Now that all the Matches are set up, select Update to save your changes.



30. The draggable elements on the Stage now show a hand icon, and the drop target element shows a target icon.
-